



SAND SPRINGS CULTURAL & HISTORICAL MUSEUM
9 EAST BROADWAY – SAND SPRINGS, OK 74063
(918)-246-2509



TULSA

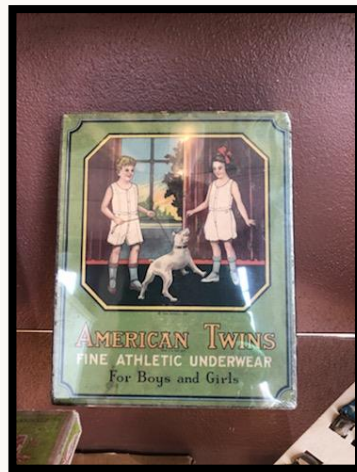
ANTIQUES AND BOTTLE CLUB

NOW ON DISPLAY

This is the second display of different items members of this club have shared with the museum. When we ask them to go to their “warehouse” and come up with an exhibit, we never know what they will come up with—and everything they fill the display cases with is always wonderful!!!



Pottery



Dry Goods Packaging



Apothecary

**DRY
GOODS:**
Fabric, thread,
clothing and
related
merchandise

Museum Hours:

Tuesday-Friday
1:00 pm to 5:00 pm
Saturday
10:00 am to 2:00 pm

Do you know why bottles with colored water were placed in the window of an apothecary shop?

Or, what did it mean if the water was colored red?

Come to the Museum and find out!!!